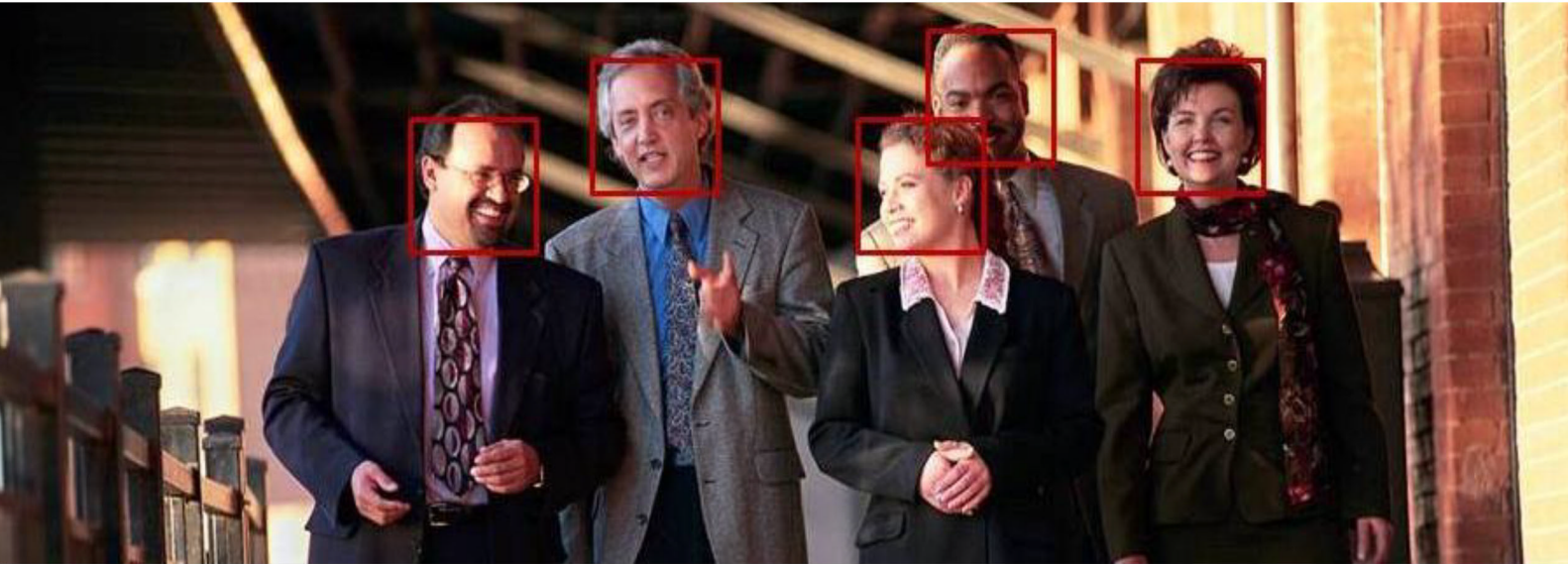




हमसे कोई
छुप नहीं सकता

PROSONIC
Securing People

Face Recognizer™



Overview

PROSONIC Face Recognizer™ is a Deep Learning and AI-based face detection, search and recognition solution with an accuracy as high as 99.6%.

Face detection and recognition are key tools for security professionals. Though video archiving solutions provide complete records of what happened in the scene, they do not allow for someone to quickly scan people and faces present in the scene to shortlist, target and identify potential miscreants.

Face Recognizer provides the following capabilities:

- Detect and log faces
- Recognize faces (with pre-enrollment)
- Search for similar faces from a single camera or across multiple cameras
- Detect any matches with faces on the watch list database and provide alerts

Benefits

Face Recognizer provides many benefits:

- Enables security professionals to shortlist, target and identify intruders, loiterers and potential miscreants
- Automatically creates a log of people in the camera or scene which can be used for forensic investigation
- Allows people to be tracked across multiple cameras or locations to identify potential issues or threats
- Enables automated matching against a watch list, with real time alerting
- Increases productivity and efficiency of security professionals
- Face recognition accuracy up to 99.6% on public standard data set
- Easy to deploy with a wide variety of cameras

Features

PROSONIC Face Recognizer has powerful and flexible features:

- Detect, recognize and log faces. Face resolution 70 pixels min, 100-300 recommended. Min 30 pixels between eyes, 50-150 recommended.
- Angle variations from frontal face – yaw +/- 25 degrees, pitch +/- 25 degrees, roll +/- 20 degrees
- Crisp, no-blur images required



- Face database allows up to 100K faces
- Multiple enrollment pictures required per person. Video enrollment can be used which captures 5-10 pictures per enrollment.
- On the spot enrollment also supported
- Recognition in less than 1-2 seconds
- Watch list to save and match in real time
- Alerts provided on watch list matches



- Input: RTSP/HTTP stream from network/IP cameras
- Supports integration with VMS such as Milestone, Pelco
- Works with color, B/W and IR cameras
- Report provided on faces recognized
- Can provide processed RTMP stream with overlay for faces and names if face is recognized
- Search by name or similar faces

Applications

Face Recognizer can be used for:

- Secure facilities with a large campus
- Financial institutions, banks and retail stores
- Airports, ports, maritime and government institutions
- Enterprise and commercial security
- Entertainment, casinos and gaming
- Schools and educational institutions
- Urban and public area monitoring
- Law enforcement and transportation

Platform Specifications

Face Recognizer is available in the following forms:

- SDK for embedding in cameras with video chipsets from Ambarella, Qualcomm, HiSilicon and others
- Software application and SDK running on Intel-based servers
- Cloud-based web services running on public or private cloud

About PROSONIC

PROSONIC is Specialist in AI and Deep Learning-based video analytics and video cloud software for Smart Cameras. **PROSONIC** solutions provide actionable insights for security and monitoring in Smart Home/Enterprise/City and Retail applications. **PROSONIC** Advanced Driver Assistance Systems (ADAS) improve car and road safety in automobiles. **PROSONIC** is a privately-held company with headquarters in Pune Maharashtra, India

PROSONIC Technologies Pvt. Ltd.
721/1 Davabindu, Prashant Nagar,
Navi Peth, Pune, Maharashtra 411030

+ 91 20 2453 0014
www.prosonic.co.in
info@prosonic.in

