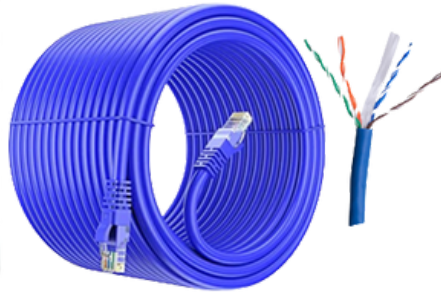


PROSONIC

FASTEST CONNECTIVITY...



CAT 6 CABLE INDOOR



- PURE COPPER
- INTERNATIONAL STANDARD TWISTING
- VIRGIN FRESH PVC
- DCM TESTED
- FLUKE TESTED
- VIRGIN HIGH QUALITY PVC

SPECIFICATION

Conductor	Solid Bare Electrolytic Grade Copper Nominal
Conductor Diameter	24 AWG (0.510 ± 0.015 mm)
Insulation	Polyethylene (HDPE)
Pairing	Twisted into Two core
No.of Pair	4, Each pair Twisted
Color Code:	
Pair #1	Orange-White with Orange
Pair #2	Brown-White with Brown
Pair #3	Blue-White with Blue
Pair #4	Green-White with Green
Outer Sheath material	PVC
Colour of Sheath	L-Grey
Approximate OD	5.4 ± 0.30 mm
Rip Cord	Yes
Sequential Marking	At Every Meter
Cross Filler	HDPE
Temperature Rating	-20 to + 60 °c
Packing	305 Mtrs in a Box

Physical Characteristics

Installation Temperature	0 to +50°C
Storage Temperature	-20 to +75°C
Operating Temperature	-20 to +60°C

ELECTRICAL PARAMETER

CONDUCTOR RESISTANCE	(DC)93.5Ω/1000mtr @20°c Max
RESISTANCE UNBALANCE	5% Max
MUTUAL CAPACITANCE	5.6 nf/100 mtr Max
NVP	69%
IMPEDANCE	100 ± 15% Ω
Worst Cable Skew	45ns/100 mtr.



GeM
Government
e Marketplace

एन एस आई सी
NSIC
ISO 9001 : 2008



PROSONIC

FASTEST CONNECTIVITY...



HIGH FREQUENCY ELECTRICAL PARAMETERS

FREQ (MHz)	ATT (dB/100m) max.	NEXT (dB) min.	PS.NEXT (dB) min.	ACRF (dB@100 m) min.	PS.ACRF (dB@ 100 m) min	Return Loss (dB/100m)
1	2.1	65.0	62.0	63.3	60.3	19
4	4.0	63.0	60.5	51.2	48.2	19
8	5.7	58.2	55.6	45.2	42.2	19
10	6.3	56.6	54.0	43.3	40.3	19
16	8.0	53.2	50.6	39.2	36.2	18
20	9.0	51.6	49.0	37.2	34.2	17.5
25	10.1	50.0	47.3	35.3	32.3	17.0
31.25	11.4	48.4	45.7	33.4	30.4	16.5
62.5	16.5	43.4	40.6	27.3	24.3	14.0
100	21.3	39.9	37.1	23.3	20.3	12.0
200	31.5	34.8	31.9	17.2	14.2	9.0
250	35.9	33.1	30.2	15.3	12.3	8.0

